

# Device Overview

[www.digitalmatter.com](http://www.digitalmatter.com)





# Our Devices

## Cellular

### Battery-Powered

- Yabby3
- Yabby Edge
- Oyster3
- Oyster Edge
- Remora3

### OBDII and Wired

- Bolt2
- Dart3
- G70
- G120

## LoRaWAN®

### Battery-Powered

- Yabby Edge LoRaWAN
- Oyster3 LoRaWAN

### Wired

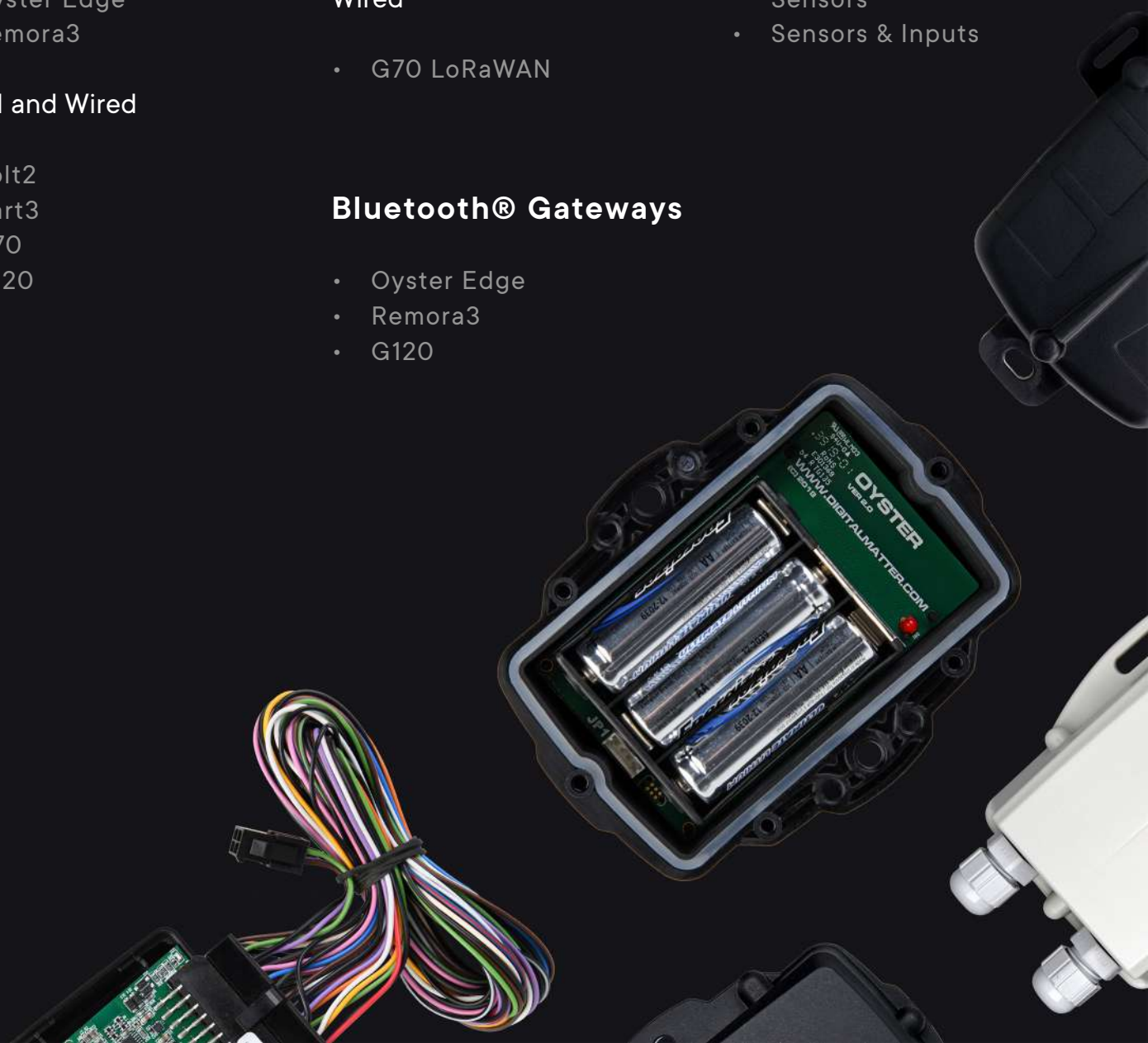
- G70 LoRaWAN

## Bluetooth® Gateways

- Oyster Edge
- Remora3
- G120

## Peripherals / Third-Party Support

- RFID Driver ID Reader
- iButton Driver ID Reader
- Bluetooth® Tags & Sensors
- Sensors & Inputs





# About Digital Matter



Digital Matter device connections as of November 2021

# Engineered to Outperform



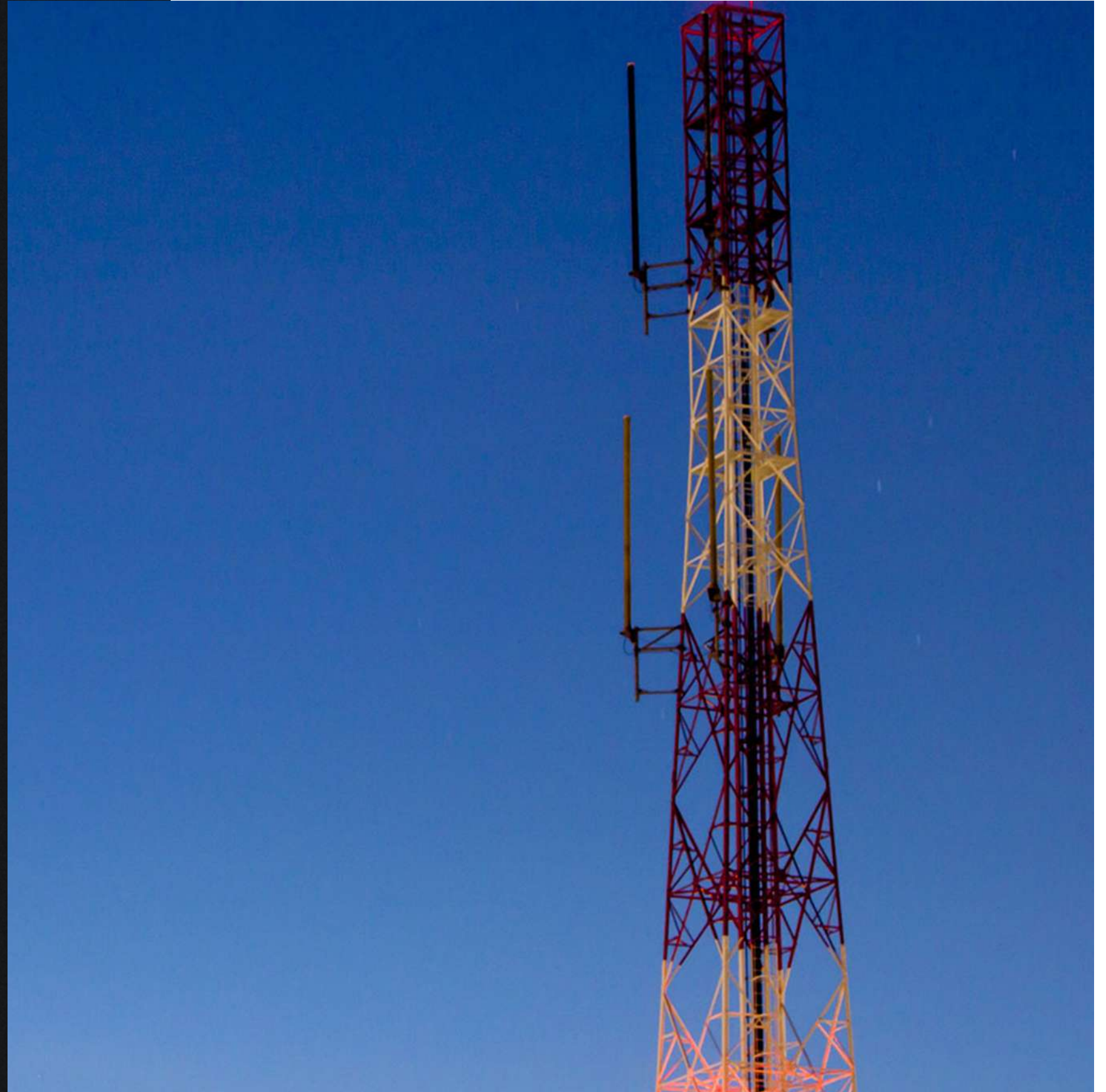
Digital Matter is a leading global developer of low-power GPS and IoT hardware for asset tracking and management applications. Engineered to outperform, we offer a versatile range of LPWAN asset tracking hardware with the largest portfolio of integration-ready battery-powered asset tracking devices across a range of connectivity technologies.

With 22 years of telematics experience and over 500 channel partners across 120 countries, Digital Matter supplies and supports scalable, and secure devices for Telematics Businesses, IoT Solution Providers, Enterprises and Network Operators around the world.



# Cellular IoT Solutions

Cellular 2G and LTE-M (Cat-M1)/NB-IoT  
Asset Tracking Solutions







# Futureproof your IoT Asset Tracking Solution

Build a better 4G/5G IoT asset tracking solution with the largest portfolio of integration-ready LTE-M (Cat-M1)/NB-IoT GPS asset tracking devices and the widest range of location technology options including GNSS, Wi-Fi Positioning, Cell Tower Positioning, and Bluetooth® Low Energy.

## Futureproof

Both LTE-M and NB-IoT networks are now formally recognized as 5G technologies, which means the networks, and our LTE-M/NB-IoT devices will be supported long after 3G and even 4G network shutdowns.

## Low-Power, Long Battery Life

With incredibly-low power consumption (1/2 to 1/3 the power consumption of a 3G modem when performing a data upload,) our LTE-M/NB-IoT asset tracking devices feature 'deploy once' battery life – reducing OPEX costs for businesses by significantly reducing battery changes, device maintenance, and support costs.

## Range and Performance

LTE-M/NB-IoT asset tracking devices offer excellent penetration for indoor and underground applications for industrial and urban assets.

## Network Roaming

Our 4G device range supports automatic roaming between LTE-M and NB-IoT networks with minimal delay and marginal impact on battery life or performance (roaming SIM required) for global and regional asset management applications.


 INDOOR/OUTDOOR ASSET TRACKING

 GNSS

 WI-FI MAC ADDRESS SCANNING

 CELL TOWER LOCATION

 BLUETOOTH® LOW ENERGY

 GLOBAL ROAMING

 CLOUD-BASED LOCATION SOLVING

 INTELLIGENT POWER MANAGEMENT

 WHITE-LABEL & INTEGRATION-READY





# Battery-powered

	Yabby3	Oyster3	Remora3	Yabby Edge	Oyster Edge
Connectivity	LTE-M/NB-IoT	2G or LTE-M/NB-IoT	LTE-M/NB-IoT	LTE-M/NB-IoT	LTE-M/NB-IoT
Example Use Cases	Small equipment, Bins/Containers	Equipment, Vehicles, Bins/Containers - Everything!	Large equipment, Trailers, BLE tag and sensor monitoring, Cold Chain	Supply Chain, Logistics, Pallets, Carts/Trolleys, Equipment, Livestock	Supply Chain, Logistics, Pallets, Carts/Trolleys, Equipment, BLE Tag and sensor monitoring, Cold Chain
Environment	Outdoor	Outdoor	Outdoor	Indoor/Outdoor	Indoor/Outdoor
IP67 Rated	Yes	Yes	Yes	Yes	Yes
GNSS	Full	Full	Full	GNSS Scanning	GNSS Scanning
Wi-Fi MAC Address Scanning				Yes	Yes
Cell Tower Location	Advanced	Advanced	Advanced	Advanced	Advanced
Batteries	3 x AAA Lithium	3 x AA Lithium or Lithium Thionyl Chloride (LTC)	2 x D Lithium Thionyl Chloride (LTC)	3 x AAA Lithium	3 x AA Lithium
*Battery Life (Daily)	**10+ Years	**10+ Years	**20+ Years	**10+ Years	**10+ Years
*Battery Life (Movement-Based)	5 Years	7 Years	**15+ Years	4 Years	7 Years
*Battery Life (Hourly)	1.5 Years	3.5 Years	**10+ Years	2 Years	4.5 Years
Bluetooth®			Bluetooth 5.2 Gateway		Bluetooth 5.2 Gateway
Cloud-Based Location Solving				Yes	Yes
Location Precision	High	High	High	Med-High	Med-High

\* Battery life estimates are based on LTE-M/NB-IoT Connectivity and influenced by several factors including temperature, installation location and orientation of the device, the frequency of location updates, network coverage, sensor integrations, peripherals, accelerometer settings, and more. Battery life calculators are available at [support.digitalmatter.com](https://support.digitalmatter.com).

\*\* For battery life estimates over 10 years, please consider network technology availability and other factors such as battery manufacturer lifespan and self-discharge specifications.

# Yabby3

LTE-M/NB-IoT

Compact and ultra-rugged battery-powered GPS asset tracker featuring 10+ years battery life



## Standard IP67

Dimensions - 85 x 63 x 24 mm (3.35 x 2.48 x .94)

Snap Housing (75 x 45 x 25 mm (2.95 x 1.77 x 0.98)) also available for smaller form factor (not IP rated). Livestock housing also available for securing device to animals.



## 'Deploy Once' Battery Life

Over 10+ years battery life at once-daily location updates



## User-Replaceable Batteries

Uses off-the-shelf 3 x AAA batteries



## Adaptive Tracking

Periodic or optional movement-based tracking - tracks assets throughout the day and/or when movement occurs, entering sleep mode when inactive to conserve power and data usage



## Battery Life Alerts

"Battery Low" and "Battery Critical" alerts



## Ultra-Rugged

IP67 rated housing ensures the device can withstand fine dust, high-pressure spray, and submersion for 30 minutes in 1m of water

# Oyster3

2G or LTE-M/NB-IoT

Next generation of our best-selling Oyster series - Ultra-rugged GPS asset tracking device featuring 10+ years battery life



## Standard IP67

Dimensions - 108 x 86 x 31 mm (4.25 x 3.39 x 1.22)

### 'Deploy Once' Battery Life

Over 10+ years battery life on user-replaceable 3 x AA Lithium or Lithium Thionyl Chloride (LTC) batteries for extreme temperature operation



### Adaptive Tracking

Periodic or optional movement-based tracking - tracks assets throughout the day and/or when movement occurs, entering sleep mode when inactive to conserve power and data usage



### Battery Life Alerts

"Battery Low" and "Battery Critical" alerts



### Ultra-Rugged

IP67 rated housing ensures the device can withstand fine dust, high-pressure spray, and submersion for 30 minutes in 1m of water



# Remora3

LTE-M/NB-IoT

Ultra-rugged, long-life battery-powered GPS asset tracking device and Bluetooth® Gateway featuring \*20 years of battery life and tamper detect - **longest-lasting battery-powered device on the market**



## Standard IP67

Dimensions - 224 x 91 x 41 mm (8.82 x 3.58 x 1.61")

\* For battery life estimates over 10 years, please consider network technology availability and other factors such as battery manufacturer lifespan and self-discharge specifications.

## 'Deploy Once' Battery Life

Over \*20 years battery life movement-based tracking, 2 years at most aggressive (second-by-second) tracking performance

## Bluetooth® 5.2 Gateway

Reports on nearby Bluetooth tags and sensors for affordable tagged asset management and sensor monitoring applications

## User-Replaceable Batteries

Uses off-the shelf 2 x D Lithium Thionyl Chloride (LTC) batteries for extreme temperature operation

## Adaptive Tracking

Periodic or optional movement-based tracking - tracks assets throughout the day and/or when movement occurs, entering sleep mode when inactive to conserve power and data usage

## Battery Life Alerts

"Battery Low" and "Battery Critical" alerts

## Tamper Detect

Magnetic Tamper Detect

## Ultra-Rugged

IP67 rated housing ensures the device can withstand fine dust, high-pressure spray, and submersion for 30 minutes in 1m of water





# Edge Portfolio

Scale and diversify your IoT and telematics portfolio with the latest in Indoor/Outdoor LPWAN asset tracking technologies

## Indoor/Outdoor Asset Tracking & Management

Performing where GNSS-only devices fail, Edge devices support multiple location technologies (GNSS, Wi-Fi AP MAC Address Scanning, and Cell Tower location or LoRaWAN® Geolocation Fallback), enabling new and affordable Indoor-to-Outdoor asset management applications in key areas such as logistics and supply chain visibility, high-value pallet and package tracking, kegs and returnables tracking, emergency and hospital equipment management, bin, cart and trolley tracking, and more.

## Cloud-Based Location Solving

Where most asset tracking devices handle position calculations on-device, Edge devices determine location in Digital Matter's cloud-based solver to significantly reduce power consumption - over 5-10 x lower power consumption than most on-device GNSS solutions.

## 'Deploy Once' Battery Life

With industry-leading battery life, the Edge portfolio reduces the total cost of device ownership for businesses by eliminating battery changes, device maintenance, and support costs. Intelligent power-saving features such as adaptive tracking, early registration abort, location scan throttling and more ensure Edge devices can perform on a single set of batteries for years, even at more aggressive tracking parameters.

## Ultimate Control

The Edge portfolio offers system integrators unprecedented control over device parameters and performance to best fit any indoor-outdoor asset tracking and management application. Enable, disable and customize location technologies to optimize performance, select between location service providers to meet accuracy or budget requirements, and take control of reporting frequencies, movement-based events, accelerometer sensitivity, and much more.



ASSET LOCATION



GEOFENCING



IMPACT DETECTION



ROTATION COUNTING



RUN HOURS



SENSOR MONITORING



THEFT RECOVERY



TILT DETECTION



# YabbyEDGE

LTE-M/NB-IoT

Ultra-rugged and compact Indoor/Outdoor asset tracker. Features cloud-based location solving for 10+ years of battery life. LoRaWAN versions also available.



## Standard IP67

Dimensions - 85 x 63 x 24 mm (3.35 x 2.48 x .94)

Snap Housing (75 x 45 x 25 mm (2.95 x 1.77 x 0.98) also available for smaller form factor (not IP rated). Livestock housing also available for securing device to animals.



## Indoor/Outdoor

GNSS, Wi-Fi AP MAC Address Scanning, and Cell Tower location fallback for seamless indoor/outdoor asset management



## 'Deploy Once' Battery Life

Over 10+ years battery life on only 3 x AAA user-replaceable batteries



## Cloud-Based Location

Position calculations are handled in the cloud (versus on-device) for substantial power savings



## Adaptive Tracking

Periodic or optional movement-based tracking - tracks assets throughout the day and/or when movement occurs, entering sleep mode when inactive to conserve power and data usage



## Battery Life Alerts

"Battery Low" and "Battery Critical" alerts



## Ultra-Rugged

IP67 rated housing ensures the device can withstand fine dust, high-pressure spray, submersion for 30 minutes in 1m of water





# OysterEDGE

LTE-M/NB-IoT

Ultra-rugged, Indoor/Outdoor battery-powered asset tracking device and Bluetooth® Gateway. Features cloud-based location solving for over 10+ years of battery life.



**Standard IP67**

Dimensions - 108 x 86 x 31 mm (4.25 x 3.39 x 1.22)



## Indoor/Outdoor

GNSS, Wi-Fi AP MAC Address Scanning, and Cell Tower location for seamless indoor/outdoor asset management



## Bluetooth® 5.2

Reports on nearby Bluetooth tags and sensors for affordable tagged asset management and sensor monitoring applications



## 'Deploy Once' Battery Life

Over 10+ years battery life on only 3 x AA user-replaceable batteries



## Cloud-Based Location

Position calculations are handled in the cloud (versus on-device) for substantial power savings



## Adaptive Tracking

Periodic or optional movement-based tracking - tracks assets throughout the day and/or when movement occurs, entering sleep mode when inactive to conserve power and data usage



## Battery Life Alerts

"Battery Low" and "Battery Critical" alerts



## Ultra-Rugged

IP67 rated housing ensures the device can withstand fine dust, high-pressure spray, and submersion for 30 minutes in 1m of water





OBDII & WIRED

	Bolt2	Dart3	G70	G120
Connectivity	LTE-M/NB-IoT	2G or LTE-M/NB-IoT	2G or LTE-M/NB-IoT	2G or LTE-M/NB-IoT
Example Use Cases	Vehicles, Fleet Management	Vehicles, Advanced Fleet Management	Vehicles, Trailers, Heavy Equipment, Advanced Fleet Management,	Vehicles, Trailers, Heavy Equipment, Bluetooth tag/ sensor monitoring, Advanced Fleet Management, Mining, Oil and Gas
Installation	OBDII	Wired / optional OBDII or cigarette lighter power harness	Wired	Wired
IP67 Rated			Yes	
Real-Time Tracking	Yes	Yes	Yes	Yes
Cell Tower Location Fallback	Yes	Yes	Yes	Yes
Bluetooth®				Bluetooth 5.0 Gateway
Global Coverage				Iridium Satellite Hybrid Option
GPS Jamming Detection	Yes	Yes	Yes	Yes
Backup Battery	Yes	Yes	Yes	Yes
Ignition Digital Input		1	1	1
Digital Inputs		3	3	6
Analog Inputs		1	1	1
Switched Ground Digital Output		1	1	2
Switched Power Out		Yes		Yes
RS-232 Interface				Yes
Driver ID		Yes	Yes	Yes
Driver Behavior	Yes	Yes	Yes	Yes
Run Hour Monitoring / Odometer	Yes	Yes	Yes	Yes
Remote Immobilization		Yes	Yes	Yes
Wiegand Support		Yes	Yes	Yes



# Bolt2

LTE-M/NB-IoT

Compact and affordable vehicle tracking device featuring simple plug-and-play installation and backup battery for real-time fleet management, driver safety and behavior monitoring, theft recovery, and more



## Real-Time Tracking

High-precision GPS/GLONASS tracking device plugs into existing OBDII ports



## Backup Battery

Internal backup battery – if the device is removed from power it will continue to track for a period of time



## Critical Alerts

Unplugged/power loss alerts to notify users of device removal, tampering, unauthorized trips, or theft



## Driver Behavior

Speeding, harsh braking and cornering, accident and rollover detection



## Run Hour Monitoring

Electronic Odometer Calculations



## Movement-Based Tracking

Accelerometer for adaptive and movement-based tracking



## Plug-and-Play

Plug and play or splitter installation options for covert install



# Dart3

2G or LTE-M/NB-IoT

Robust and affordable vehicle tracking device with inputs/outputs, remote immobilization for fleet management, driver ID, driver safety and behavior monitoring, theft recovery, and more.



## Real-Time Tracking

High-precision GNSS wired tracking device



## Inputs/Outputs

1 x Ignition Digital Input, 3 x Digital Inputs, 1 x Analog Input, 1 x Switched Ground Digital Output, Switched Power Out



## Backup Battery

Internal Backup Battery in case of loss of power or tampering



## Driver ID

Configure iButton®, Wiegand or RFID readers for Driver ID



## Driver Behavior

Run hour monitoring, accident and rollover detection, speeding, harsh braking and cornering, and more



## Remote Immobilization

Immobilization option to safely disable vehicles and equipment remotely



## Installation

Wired or optional OBDII or cigarette lighter power harness available for plug-and-play installation



# G70

2G or LTE-M/NB-IoT

Rugged and robust vehicle, trailer, or heavy equipment tracking device with inputs/outputs, remote immobilization for fleet management, equipment monitoring, driver ID, theft recovery, and more



## Real-Time Tracking

High-precision GNSS wired tracking device



## Inputs/Outputs

1 x Ignition Digital Input, 3 x Digital Inputs, 1 x Analog Input, 1 x Switched Ground Digital Output



## Backup Battery

Internal Backup Battery in case of loss of power or tampering



## Driver ID

Configure iButton®, TTL, or Wiegand inputs for Driver ID Readers



## Driver Behavior

Run hour monitoring, accident and rollover detection, speeding, harsh braking and cornering, and more



## Remote Immobilization

Immobilization option to safely disable vehicles and equipment remotely



## Ultra-Rugged

Weatherproof and ultra-rugged IP67 Housing





# G120

2G or LTE-M/NB-IoT  
Optional Iridium Satellite Hybrid

GPS tracking device and Bluetooth® Gateway with optional Iridium Satellite for global coverage with inputs/outputs, RS-232 Interface, and remote immobilization for fleet management, driver ID, driver safety and behavior monitoring, remote worker safety, theft recovery, and more



## Real-Time Tracking

High-precision GPS/GLONASS tracking device wired to vehicles or equipment



## Backup Battery

Internal Backup Battery in case of loss of power or tampering



## Bluetooth Gateway

Bluetooth® 5.0 Gateway for tagged asset management and sensor monitoring



## Inputs/Outputs

1 x Analog Input, 6 x Digital Inputs, 2 x Switched Ground Digital Outputs, 1 x Ignition Digital Input, Switched Power Out



## RS-232 Interface

RS-232 Interface to connect optional Iridium Edge® Module or interface with controllers and sensors



## Driver ID

Configure iButton®, RFID readers and Wiegand Interface for Driver ID



## Driver Behavior

Accident and rollover detection, speeding, harsh braking, and more



## In-Cab Alerts

Built-in Buzzer for in-cab alerts



# LoRaWAN® Solutions

Low-power, high-performance  
LoRaWAN® asset tracking hardware







	Yabby Edge LoRaWAN	Oyster3 LoRaWAN	G70 LoRaWAN
Example Use Cases	Supply Chain, Logistics, Pallets, Carts/Trolleys, Equipment, Livestock	Equipment, Vehicles, Bins/Containers - Everything!	Fleet Management, Vehicle and Equipment Tracking
Power	Battery-Powered	Battery-Powered	Wired
Installation	Covertly install anywhere with screws, bolts, cable ties, etc. Livestock housing available for securing device to animals.	Covertly install anywhere with screws, bolts, cable ties, etc.	7 wire harness 1m Length
IP67 Rated	Yes	Yes	Yes
Environment	Indoor/Outdoor	Outdoor	Outdoor
Cloud-Based Location Solving	Yes		
GNSS	GNSS Scanning	Full	Full
Wi-Fi MAC Address Scanning	Yes		
LoRaWAN® Geolocation	Yes	Yes	Yes
Accelerometer	Yes	Yes	Yes
Batteries	2 x AAA Lithium	3 x AA Lithium or Lithium Thionyl Chloride (LTC)	
*Battery Life (Daily)	**10+ Years	**10+ Years	
*Battery Life (Movement-Based)	6 Years	5 Years	
*Battery Life (Hourly)	3 Years	2 Years	
Internal Backup Battery			Rechargeable 1100mAh LiPo
Inputs / Outputs			1 x Analog Input, 3 x Digital Inputs, 1 x Switched Ground Digital Output, 1 x Ignition Digital Input

\* Battery life estimates are influenced by several factors including temperature, installation location and orientation of the device, the frequency of location updates, network coverage, sensor integrations, peripherals, accelerometer settings, and more. Battery life calculators are available at [support.digitalmatter.com](https://support.digitalmatter.com).

\*\* For battery life estimates over 10 years, please consider network technology availability and other factors such as battery manufacturer lifespan and self-discharge specifications.



# Yabby**EDGE** LoRaWAN®

868 or 902-928 MHz versions

Ultra-rugged and compact Indoor/Outdoor asset tracker. Features cloud-based location solving for 10+ years of battery life.



## Indoor/Outdoor

GNSS, Wi-Fi AP MAC Address Scanning, and LoRaWAN® geolocation fallback for seamless indoor/outdoor asset management



## 'Deploy Once' Battery Life

Over 10+ years battery life on only 2 x AAA user-replaceable batteries



## Cloud-Based Location

Position calculations are handled in the cloud (versus on-device) for substantial power savings



## Adaptive Tracking

Periodic or optional movement-based tracking - tracks assets throughout the day and/or when movement occurs, entering sleep mode when inactive to conserve power and data usage



## Battery Life Monitoring

Periodic battery status uplinks give breakdown of power use



## Ultra-Rugged

IP67 rated housing ensures the device can withstand fine dust, high-pressure spray, submersion for 30 minutes in 1m of water



# Oyster3 LoRaWAN®

All 868, 902-928MHz LoRaWAN®  
regions supported

Next generation of our best-selling Oyster series -  
Ultra-rugged battery-powered GPS asset tracking  
device for LoRaWAN® networks featuring 10 years  
battery life



## 'Deploy Once' Battery Life

Over 10+ years battery life on  
user-replaceable 3 x AA Lithium  
or Lithium Thionyl Chloride (LTC)  
batteries for extreme temperature  
operation

## Adaptive Tracking

Periodic or optional movement-  
based tracking - tracks assets  
throughout the day and/or when  
movement occurs, entering sleep  
mode when inactive to conserve  
power and data usage

## Battery Life Monitoring

Periodic battery status uplinks give  
a breakdown of power use

## Ultra-Rugged

IP67 rated housing ensures  
the device can withstand fine  
dust, high-pressure spray, and  
submersion for 30 minutes in 1m  
of water

# G70 LoRaWAN®

All 868, 902-928MHz LoRaWAN®  
regions supported

Robust and ultra-rugged LoRaWAN® vehicle and  
heavy equipment tracking device with inputs/  
outputs for fleet management, equipment  
monitoring



## GPS/GLONASS

High-precision GPS/GLONASS  
tracking device



## Ultra-Rugged

Weatherproof and ultra-rugged  
IP67 Housing



## Backup Battery

Internal Backup Battery in case  
of loss of power or tampering



## Inputs/Outputs

1 x Analog Input, 3 x Digital  
Inputs, 1 x Switched Ground  
Digital Output, 1 x Ignition  
Digital Input



## Run Hour Monitoring

On-Device Odometer Readings





# Bluetooth® Solutions

Affordable asset management and  
sensor monitoring solutions with  
Bluetooth® Low Energy





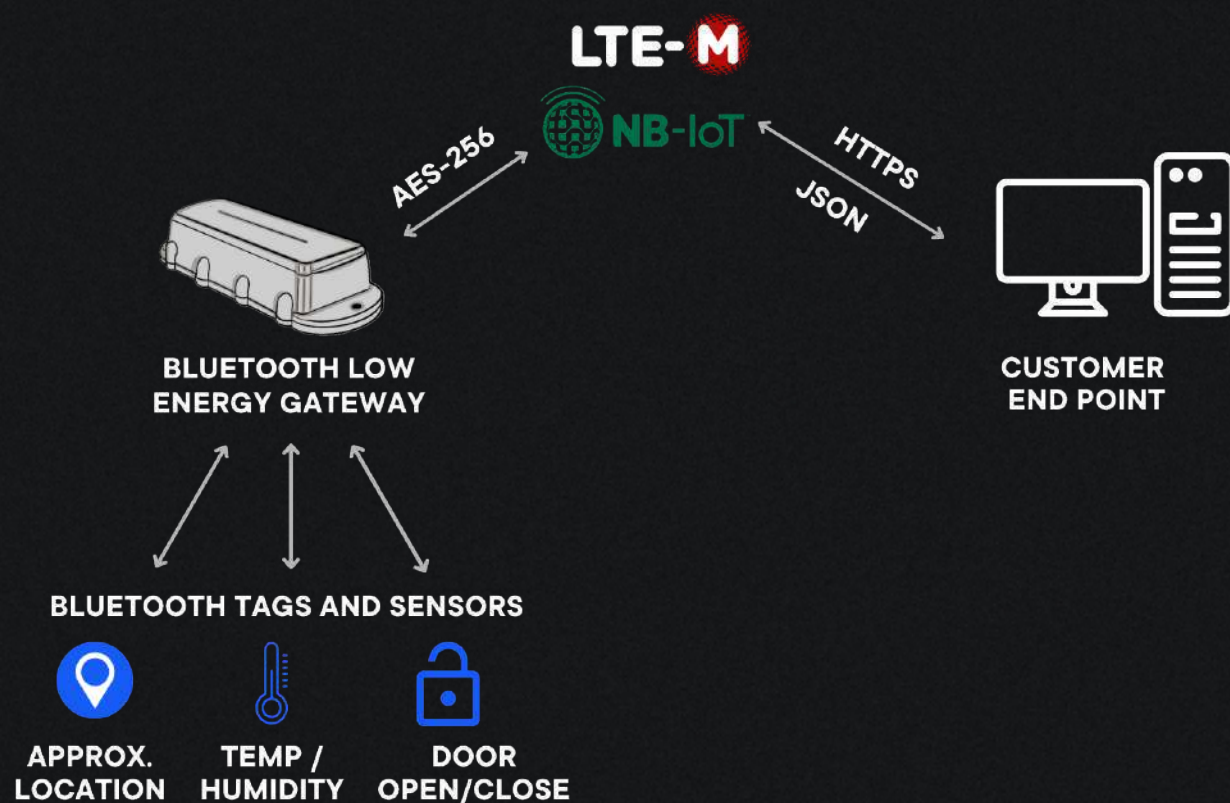


# Track More for Less with Bluetooth Low Energy

Several of our IoT asset tracking devices feature concurrent GNSS, for highly accurate and reliable location tracking, as well as Bluetooth Low Energy to communicate with nearby BLE tags, sensors and beacons.

With both wired and battery-powered GNSS and Bluetooth Gateway solutions, our devices can be covertly installed in pallets, packaging, and equipment, or wired into high-value assets such as vehicles and trailers. In addition to providing real-time location data for that asset, the gateway devices will also continuously or periodically 'listen for' nearby BLE accessories, transmitting received data through Cellular LTE-M/NB-IoT networks to your choice of IoT or Telematics platform.

With simple integration protocols and hundreds of Bluetooth Low Energy tags, sensors, and beacons on the market, it's now faster and more affordable than ever to protect, optimize, and derive more value from the assets that matter.



## Shock, Impact and High-G Force Detection

Receive instant alerts when, and at what locations, high-value assets or dangerous goods experience shock, vibration, or high-g force events during transit.

## Security and Tamper Detection

Integrate with a variety of Bluetooth sensors to enable door open/close monitoring for added security.

## Inventory and Asset Management

Bluetooth Location Tags can be used to manage stock, inventory, pallets, tools, small pieces of equipment, or other assets where a larger (and more expensive) full GNSS device may not make commercial sense.

## Cold Chain Management

Install Bluetooth Low Energy sensors in temperature-sensitive trucks, freezers, or packages to maintain safety and compliance.

## Enhanced Fleet Management

Utilize Bluetooth fuel level and fuel flow monitoring probes, axle load meters, tire pressure and temperature sensors, and more for a robust and wire-free fleet management solution.

## Smart Farming and Agtech

Remotely measure rainfall, soil moisture, humidity, temperature, water and fuel tank levels, and more to improve and optimize farm operations.





Cellular

# Bluetooth® Gateways

	Oyster Edge	Remora3	G120
Connectivity	LTE-M/NB-IoT	LTE-M/NB-IoT	2G or LTE-M/NB-IoT / Optional Iridium Edge Satellite Hybrid
Example Use Cases	Supply Chain, Logistics, Connected Packages, Cold Chain, Wire-Free Fleet Management	Trailers, Supply Chain, Logistics, Cold Chain, Wire-Free Fleet Management	Vehicles, Trailers, Heavy Equipment, Bluetooth tag/sensor monitoring, Advanced Fleet Management, Out-of-coverage tracking
Power	Battery-Powered	Battery-Powered	Wired
Installation	Covertly install anywhere with screws, bolts, cable ties, etc.	Covertly install anywhere with screws, bolts, cable ties, etc.	24 pin connector provided as standard
IP67 Rated	Yes	Yes	
Environment	Indoor/Outdoor	Outdoor	Outdoor
Cloud-Based Location Solving	Yes		
GNSS	GNSS Scanning	Full	Full
Wi-Fi MAC Address Scanning	Yes		
Cell Tower Location	Yes	Yes	Yes
Accelerometer	Yes	Yes	Yes
Batteries	3 x AA Lithium	2 x D Lithium Thionyl Chloride (LTC)	
*Battery Life (Daily)	**10+ Years	**20+ Years	
*Battery Life (Movement-Based)	7 Years	15+ Years	
*Battery Life (Hourly)	4.5 Years	10+ Years	
Inputs / Outputs, Sensor Interfaces			1 x Analog Input, 6 x Digital Inputs, 2 x Switched Ground Digital Outputs, 1 x Ignition Digital Input, Switched Power Out, RS-232

\* Battery life estimates are based on LTE-M/NB-IoT Connectivity and influenced by several factors including temperature, installation location and orientation of the device, the frequency of location updates, network coverage, sensor integrations, peripherals, accelerometer settings, and more. Battery life calculators are available at [support.digitalmatter.com](https://support.digitalmatter.com).

\*\* For battery life estimates over 10 years, please consider network technology availability and other factors such as battery manufacturer lifespan and self-discharge specifications.

# Oyster

## EDGE

LTE-M/NB-IoT

Ultra-rugged, Indoor/Outdoor battery-powered asset tracking device and Bluetooth® Gateway. Features cloud-based location solving for over 10+ years of battery life.



**Standard IP67**

Dimensions - 108 x 86 x 31 mm (4.25 x 3.39 x 1.22)



### Indoor/Outdoor

GNSS, Wi-Fi AP MAC Address Scanning, and Cell Tower location for seamless indoor/outdoor asset management



### Bluetooth® 5.2

Reports on nearby Bluetooth tags and sensors for affordable tagged asset management and sensor monitoring applications



### 'Deploy Once' Battery Life

Over 10+ years battery life on only 3 x AA user-replaceable batteries



### Cloud-Based Location

Position calculations are handled in the cloud (versus on-device) for substantial power savings



### Adaptive Tracking

Periodic or optional movement-based tracking - tracks assets throughout the day and/or when movement occurs, entering sleep mode when inactive to conserve power and data usage



### Battery Life Alerts

"Battery Low" and "Battery Critical" alerts



### Ultra-Rugged

IP67 rated housing ensures the device can withstand fine dust, high-pressure spray, and submersion for 30 minutes in 1m of water



# Remora3

LTE-M/NB-IoT

Ultra-rugged, long-life battery-powered GPS asset tracking device and Bluetooth® Gateway featuring \*20 years of battery life and tamper detect - **longest-lasting battery-powered device on the market**



## Standard IP67

Dimensions - 224 x 91 x 41 mm (8.82 x 3.58 x 1.61")

\* For battery life estimates over 10 years, please consider network technology availability and other factors such as battery manufacturer lifespan and self-discharge specifications.

## 'Deploy Once' Battery Life

Over \*20 years battery life movement-based tracking, 2 years at most aggressive (second-by-second) tracking performance

## Bluetooth® 5.2 Gateway

Reports on nearby Bluetooth tags and sensors for affordable tagged asset management and sensor monitoring applications

## User-Replaceable Batteries

Uses off-the shelf 2 x D Lithium Thionyl Chloride (LTC) batteries for extreme temperature operation

## Adaptive Tracking

Periodic or optional movement-based tracking - tracks assets throughout the day and/or when movement occurs, entering sleep mode when inactive to conserve power and data usage

## Battery Life Alerts

"Battery Low" and "Battery Critical" alerts

## Tamper Detect

Magnetic Tamper Detect

## Ultra-Rugged

IP67 rated housing ensures the device can withstand fine dust, high-pressure spray, and submersion for 30 minutes in 1m of water



# G120

2G or LTE-M/NB-IoT

Optional Iridium Satellite Hybrid

GPS tracking device and Bluetooth® Gateway with optional Iridium Satellite for global coverage with inputs/outputs, RS-232 Interface, and remote immobilization for fleet management, driver ID, driver safety and behavior monitoring, remote worker safety, theft recovery, and more



## Real-Time Tracking

High-precision GPS/GLONASS tracking device wired to vehicles or equipment



## Backup Battery

Internal Backup Battery in case of loss of power or tampering



## Bluetooth Gateway

Bluetooth® 5.0 Gateway for tagged asset management and sensor monitoring



## Inputs/Outputs

1 x Analog Input, 6 x Digital Inputs, 2 x Switched Ground Digital Outputs, 1 x Ignition Digital Input, Switched Power Out



## RS-232 Interface

RS-232 Interface to connect optional Iridium Edge® Module or interface with controllers and sensors



## Driver ID

Configure iButton®, RFID readers and Wiegand Interface for Driver ID



## Driver Behavior

Accident and rollover detection, speeding, harsh braking, and more



## In-Cab Alerts

Built-in Buzzer for in-cab alerts



# Peripherals & Third-Party Support

Customize our devices to fit your use case with a wide range of peripherals and third-party sensor and input support. Visit [support.digitalmatter.com](https://support.digitalmatter.com) for supported solutions.



## RFID Driver ID Reader

Plug-and-play RFID Reader. Internal LED and buzzer for driver feedback



## iButton Driver ID Reader

Low-cost Driver ID solution. Reads Dallas iButton Tags



## Third-Party Bluetooth® Tags and Sensors

Many third-party Bluetooth tags and sensors supported



## Third-Party Sensors & Inputs

Many third-party sensors and inputs supported



# Device Management

Manage your connected devices remotely with our powerful IoT Device Management Platform

- Over-the-air (OTA) Device Provisioning
- OTA Firmware and Parameter Updates
- Device Health Monitoring
- Debugging and Server Logs
- Cloud-Based Location Solver
- Flexible Data Conduit to your choice of software

# Integration

Send data to the platform of your choosing with secure and flexible integration options via Webhook, TCP or HTTP/HTTPS, Direct Integration or Data Splitting.

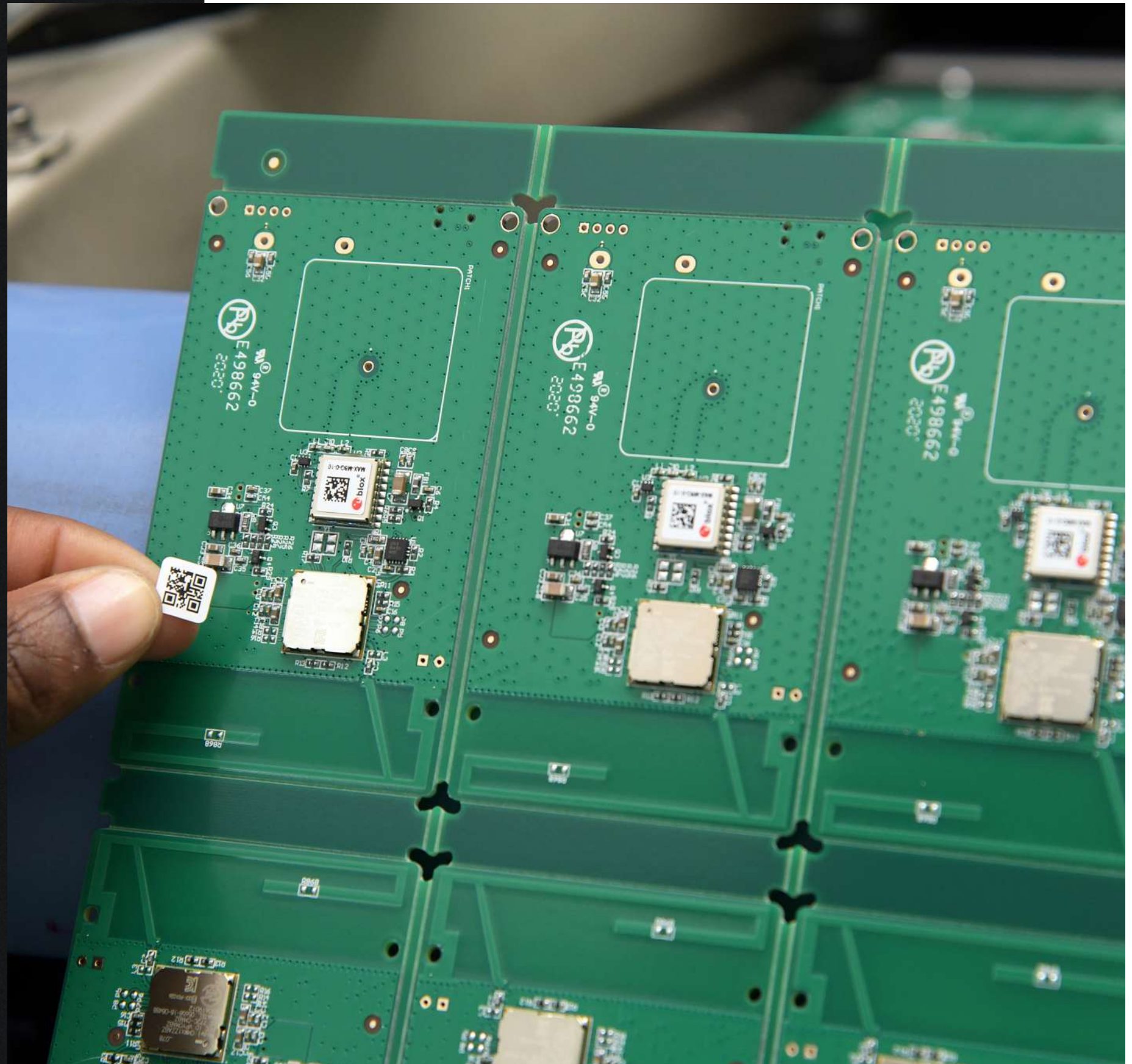




# Development

Accelerate time to market by adapting our current range of devices to fit niche applications with custom firmware, housing, and sensor integrations, or work with us to develop a fully-custom solution.

- Validated Reference Designs
- Design for Manufacturing
- Design for Certification
- Design for Durability





# Security

We implement comprehensive security protocols on our devices and software to protect against attacks on the integrity and confidentiality of your telematics data.

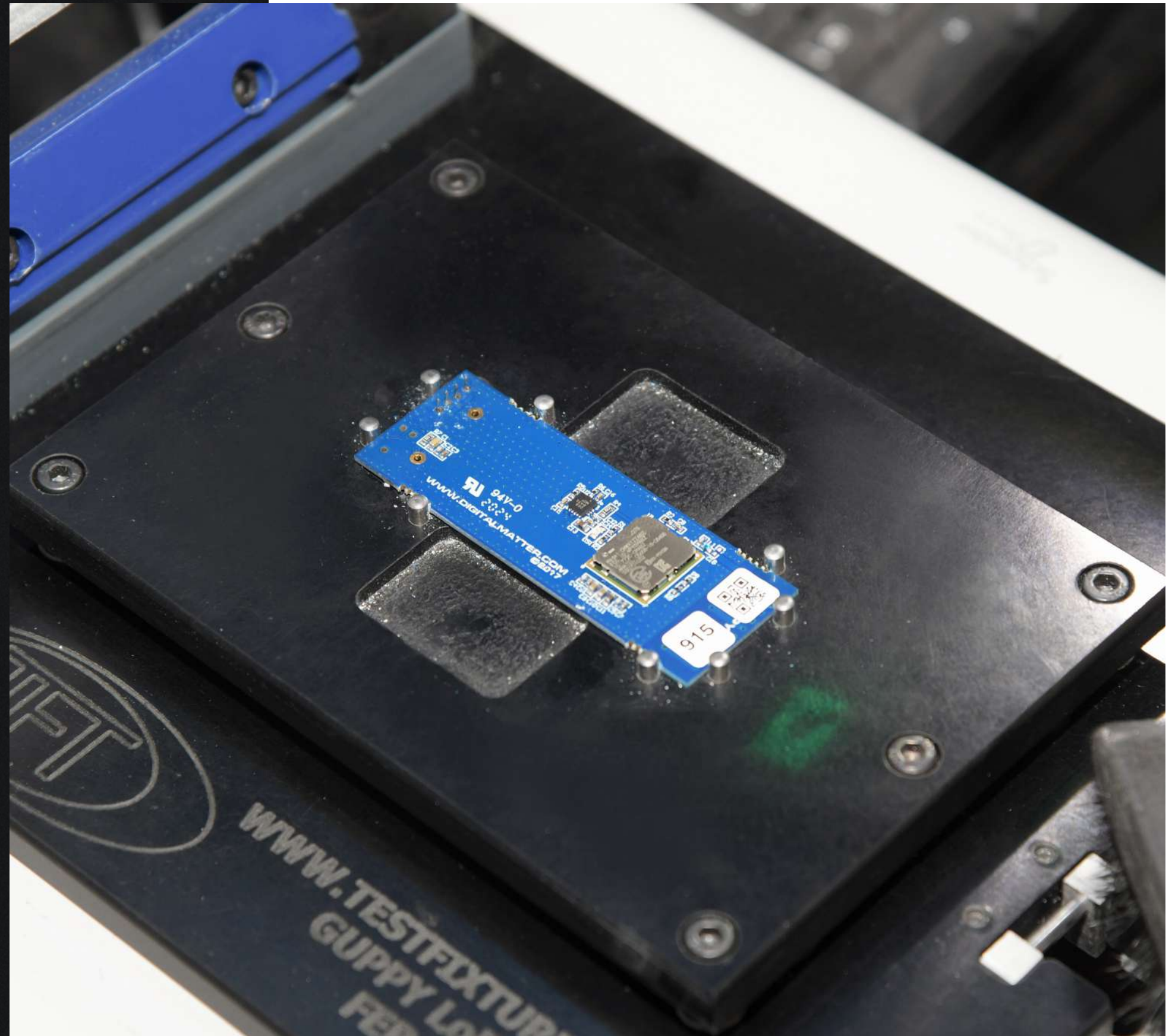
Our cellular devices use military-level 256-bit AES256CCM encryption.

LoRaWAN® networks use AES-128 Encryption.

# Support

Deploy devices faster with unbeatable onboarding and regional technical support from our team of qualified engineers.

Get instant access to our knowledge base ([www.support.digitalmatter.com](http://www.support.digitalmatter.com)) of over 600 configuration, installation, and device management guides.







# Let's Get Started

[www.digitalmatter.com](http://www.digitalmatter.com)

